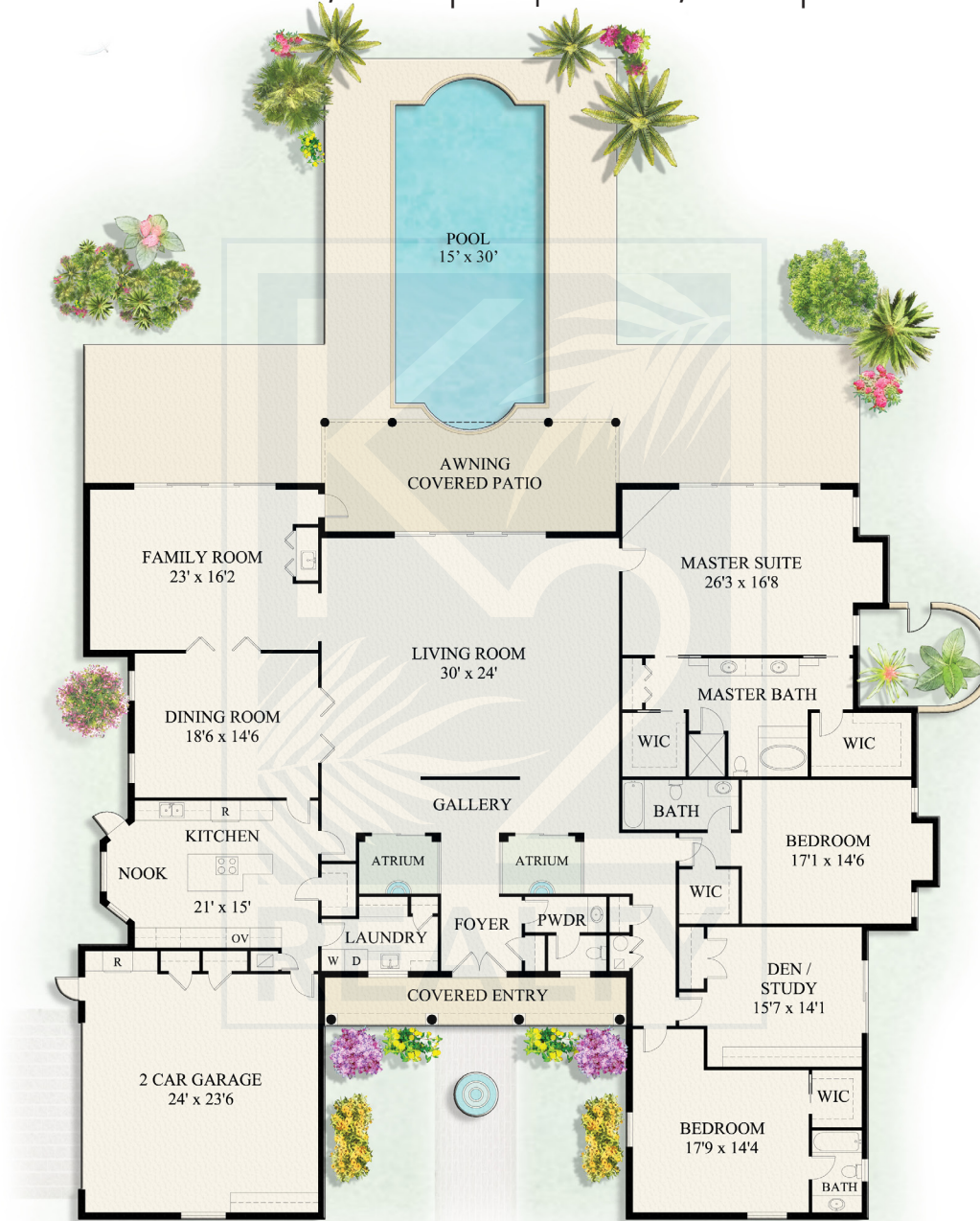


11041 TURTLE BEACH ROAD

Under Air: 4,441 Sq. Ft. | Total: 5,257 Sq. Ft.



JAMES KENNY • PAUL KANEB • JOHN LUEKING
OFFICE: 561-691-1223 • WWW.K2-REALTY.COM



Notice: Property outlines are approximate measurements. Renderings are for marketing purposes only. All measurements, features and specifications are approximate. The accuracy of this information is subject to errors, omissions and changes. An architect should be contacted for actual measurements, features and specifications.

LIVE LOST TREE®